

# Golden Memories For Sax

1. Trompete in B<sup>b</sup> /  
1. Flügelhorn in B<sup>b</sup>

Medley im Billy-Vaughn-Sound

Zusammenstellung und  
Bearbeitung: Auer-Ansbach

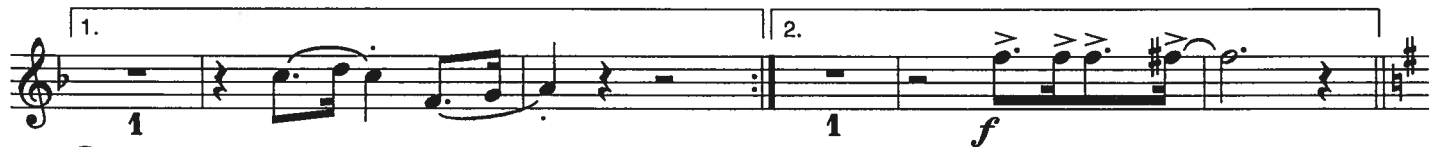
Shuffle (4 Takte = 8 Sek.)



① **You Belong To My Heart**



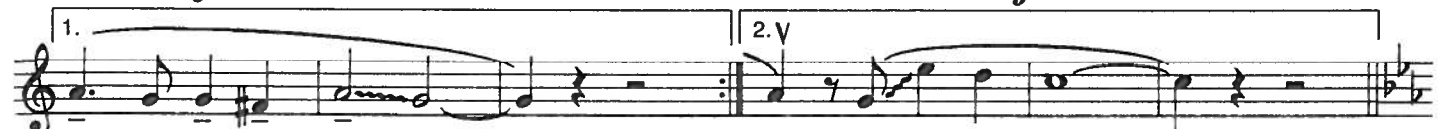
Solo unis.



② **Beg Your Pardon**



③ **Singing Hills**



④ **Cimarron**

Soli 4a

*ff*

4b

Soli

*ff*

Detailed description: This section contains the first four staves of the piece 'Cimarron'. It begins with a 7-measure rest, followed by a melodic line starting on a half note G4. The first staff includes a 'Soli' marking and a dynamic of *ff*. The second staff features a triplet of eighth notes and another triplet of eighth notes. The third staff continues the melodic line with a triplet of eighth notes. The fourth staff concludes with a 2-measure rest and a dynamic of *f*.

⑤ **By-By, My Love**

Refrain

Soli

*f*

Detailed description: This section contains the first two staves of the piece 'By-By, My Love'. The first staff starts with a 2-measure rest, followed by a melodic line starting on a half note G4. It includes a 'Refrain' marking and a dynamic of *f*. The second staff continues the melodic line with a triplet of eighth notes.

Verse

*mf*

1

Detailed description: This section contains the first staff of the 'Verse' section. It begins with a 2-measure rest, followed by a melodic line starting on a half note G4. The dynamic is *mf*. The staff is marked with a '1' below the first measure.

1.

Soli

*f*

Detailed description: This section contains the first ending of the 'Verse' section. It starts with a 1-measure rest, followed by a melodic line starting on a half note G4. It includes a 'Soli' marking and a dynamic of *f*. The staff is marked with a '1' below the first measure.

2.

5a Refrain

Soli

*f*

Detailed description: This section contains the second ending of the 'Verse' section. It starts with a 2-measure rest, followed by a melodic line starting on a half note G4. It includes a '5a Refrain' marking, a 'Soli' marking, and a dynamic of *f*. The staff is marked with a '2' below the first measure.

5b

Detailed description: This section contains the section labeled '5b'. It features a melodic line starting on a half note G4, with a 7-measure rest at the end. The staff is marked with a '7' below the final measure.

Soli

*f*

Detailed description: This section contains the section labeled '5c'. It features a melodic line starting on a half note G4, with a 3-measure rest at the end. The dynamic is *f*. The staff is marked with a '3' below the final measure.

*ff*

Detailed description: This section contains the section labeled '5d'. It features a melodic line starting on a half note G4, with a 3-measure rest at the end. The dynamic is *ff*. The staff is marked with a '3' below the final measure.