

# Day Of Triumph

Wind Band / Concert Band / Harmonie / Blasorchester / Fanfare

## Bernard Rittiner

EMR 11612

|   |  |   |  |
|---|--|---|--|
| 1 | Score  | 2 | 1 <sup>st</sup> Trombone $\text{♩} + \text{♭}$                   |
| 8 | Flute  | 2 | 2 <sup>nd</sup> Trombone $\text{♩} + \text{♭}$                   |
| 1 | Oboe ( <i>optional</i> )                         | 2 | 3 <sup>rd</sup> Trombone $\text{♩} + \text{♭}$                   |
| 1 | Bassoon ( <i>optional</i> )                      | 2 | 1 <sup>st</sup> & 2 <sup>nd</sup> Baritone $\text{♩} + \text{♭}$ |
| 1 | E $\flat$ Clarinet ( <i>optional</i> )           | 2 | E $\flat$ Bass $\text{♩}$  |
| 5 | 1 <sup>st</sup> B $\flat$ Clarinet               | 2 | B $\flat$ Bass $\text{♩}$  |
| 4 | 2 <sup>nd</sup> B $\flat$ Clarinet               | 2 | Tuba $\text{♩}$  |
| 4 | 3 <sup>rd</sup> B $\flat$ Clarinet               | 1 | String Bass ( <i>optional</i> )                                  |
| 1 | B $\flat$ Bass Clarinet ( <i>optional</i> )      | 1 | Side Drum  |
| 1 | B $\flat$ Soprano Saxophone ( <i>optional</i> )  | 1 | Cymbals  |
| 3 | E $\flat$ Alto Saxophone                         | 1 | Bass Drum  |
| 3 | B $\flat$ Tenor Saxophone                        |   |  |
| 1 | E $\flat$ Baritone Saxophone ( <i>optional</i> ) |   |  |
| 1 | E $\flat$ Trumpet / Cornet ( <i>optional</i> )   |   |  |
| 2 | 1 <sup>st</sup> B $\flat$ Trumpet / Cornet       |   |  |
| 2 | 2 <sup>nd</sup> B $\flat$ Trumpet / Cornet       |   |  |
| 2 | 3 <sup>rd</sup> B $\flat$ Trumpet / Cornet       |   |  |
| 2 | 1 <sup>st</sup> F & E $\flat$ Horn               |   |  |
| 2 | 2 <sup>nd</sup> F & E $\flat$ Horn               |   |  |
| 2 | 3 <sup>rd</sup> F & E $\flat$ Horn               |   |  |

### Special Parts

|   |   |
|---|---|
| 1 | 1 <sup>st</sup> B $\flat$ Trombone $\text{♩}$                   |
| 1 | 2 <sup>nd</sup> B $\flat$ Trombone $\text{♩}$                   |
| 1 | 3 <sup>rd</sup> B $\flat$ Trombone $\text{♩}$                   |
| 1 | 1 <sup>st</sup> & 2 <sup>nd</sup> B $\flat$ Baritone $\text{♩}$ |
| 1 | E $\flat$ Tuba $\text{♩}$                                       |
| 1 | B $\flat$ Tuba $\text{♩}$                                       |

### Fanfare Parts

|   |                            |
|---|----------------------------|
| 2 | 1 <sup>st</sup> Flugelhorn |
| 2 | 2 <sup>nd</sup> Flugelhorn |
| 2 | 3 <sup>rd</sup> Flugelhorn |

**Print & Listen**  
**Drucken & Anhören**  
**Imprimer & Ecouter**



[www.reift.ch](http://www.reift.ch)



**EDITIONS MARC REIFT**

Route du Golf 150 • CH-3963 Crans-Montana (Switzerland)

Tel. +41 (0) 27 483 12 00 • Fax +41 (0) 27 483 42 43 • E-Mail : [info@reift.ch](mailto:info@reift.ch) • [www.reift.ch](http://www.reift.ch)

# DISCOGRAPHY



## 17 Marches de concert et défilé

| Track N° | Titel / Title<br>(Komponist / Composer) | Time | N° EMR<br>Blasorchester<br>Concert Band | N° EMR<br>Brass Band |
|----------|---|------|---|----------------------|
| 1        | <b>Champions</b> (Rittiner)             | 4'00 | EMR 11532                               | EMR 3984             |
| 2        | <b>Happiness</b> (Rittiner)             | 4'00 | EMR 11582                               | EMR 9020             |
| 3        | <b>Beri-March</b> (Rittiner)            | 4'02 | EMR 11584                               | EMR 9022             |
| 4        | <b>Let's Celebrate</b> (Rittiner)       | 3'19 | EMR 11589                               | EMR 9025             |
| 5        | <b>In Harmony</b> (Rittiner)            | 4'00 | EMR 11599                               | EMR 9028             |
| 6        | <b>Magic World</b> (Rittiner)           | 4'02 | EMR 11603                               | EMR 9043             |
| 7        | <b>Day Of Triumph</b> (Rittiner)        | 3'40 | EMR 11612                               | EMR 9069             |
| 8        | <b>Liberty</b> (Rittiner)               | 3'13 | EMR 11602                               | EMR 9032             |
| 9        | <b>Golden Days</b> (Rittiner)           | 3'55 | EMR 11637                               | EMR 9106             |
| 10       | <b>Feeling Good</b> (Rittiner)          | 4'02 | EMR 11600                               | EMR 9029             |
| 11       | <b>Free Spirit</b> (Rittiner)           | 3'52 | EMR 11631                               | EMR 9105             |
| 12       | <b>Zodiac</b> (Rittiner)                | 3'37 | EMR 11638                               | EMR 9107             |
| 13       | <b>Power and Glory</b> (Rittiner)       | 4'30 | EMR 11598                               | EMR 9027             |
| 14       | <b>Day Of Joy</b> (Rittiner)            | 3'54 | EMR 11588                               | EMR 9024             |
| 15       | <b>Good News</b> (Rittiner)             | 3'41 | EMR 11585                               | EMR 9023             |
| 16       | <b>Loischy</b> (Rittiner)               | 4'01 | EMR 12066                               | EMR 9347             |
| 17       | <b>Beguine</b> (Rittiner)               | 3'44 | EMR 11679                               | EMR 9127             |

**Zu bestellen bei • A commander chez • To be ordered from:**

Photocopying is illegal!

# Day Of Triumph

Bernard Rittiner

Tempo di marcia 2 3 4 **A** 5 6 7 8 9

Flute *ff* *mf*

Oboe *ff* *mf*

Bassoon *ff* *mf*

1st B♭ Clarinet *ff* *mf*

2nd B♭ Clarinet *ff* *mf*

3rd B♭ Clarinet *ff* *mf*

B♭ Bass Clarinet *ff* *mf*

E♭ Alto Saxophone *ff* *mf*

B♭ Tenor Saxophone *ff* *mf*

E♭ Baritone Saxophone *ff* *mf*

1st B♭ Trumpet / Cornet *ff* *mf* *Div.*

2nd B♭ Trumpet / Cornet *ff* *mf*

3rd B♭ Trumpet / Cornet *ff* *mf*

1st F Horn *ff* *mf*

2nd F Horn *ff* *mf*

3rd F Horn *ff* *mf*

1st Trombone *ff* *mf*

2nd Trombone *ff* *mf*

3rd Trombone *ff* *mf*

1st / 2nd Baritone *ff* *mf* *Div.*

Tuba in C *ff* *mf*

String Bass (optional) *ff* *mf*

Side Drum *ff* *mf*

Cymbals *ff* *mf*

Bass Drum *ff* *mf*

EMR 11612

This page contains the musical score for measures 10 through 18 of a symphony. The score is arranged in a standard orchestral layout with multiple staves for each instrument family. The woodwind section includes Flute (Fl.), Oboe (Ob.), Bassoon (Bsn.), Clarinet 1 (Cl.1), Clarinet 2 (Cl.2), Clarinet 3 (Cl.3), Bass Clarinet (B.Cl.), Alto Saxophone (A.Sax.), Tenor Saxophone (T.Sax.), and Baritone Saxophone (Bar.Sax.). The brass section includes Trumpets 1, 2, and 3 (Tpt./Cnt.1, 2, 3), Horns 1, 2, and 3 (Hn.1, 2, 3), Trombones 1, 2, and 3 (Tbn.1, 2, 3), Baritone 1/2 (Bar.1/2), and Tuba. The percussion section includes Snare Drum (S.D.), Cymbal (Cymb.), and Bass Drum (B.D.). The score features dynamic markings of *f* (forte) and *mf* (mezzo-forte) throughout. A *tr* (trill) marking is present above the first measure of the Flute part. The music is in a 4/4 time signature with a key signature of two flats (B-flat and E-flat).

Fl. *f* *mf* *f*

Ob. *f* *mf* *f*

Bsn. *f* *mf* *f*

Cl.1 *f* *mf* *f*

Cl.2 *f* *mf* *f*

Cl.3 *f* *mf* *f*

B.Cl. *f* *mf* *f*

A.Sax. *f* *mf* *f*

T.Sax. *f* *mf* *f*

Bar.Sax. *f* *mf* *f*

Tpt./Cnt.1 *f* *mf* *f*

Tpt./Cnt.2 *f* *mf* *f*

Tpt./Cnt.3 *f* *mf* *f*

Hn.1 *f* *mf* *f*

Hn.2 *f* *mf* *f*

Hn.3 *f* *mf* *f*

Tbn.1 *f* *mf* *f*

Tbn.2 *f* *mf* *f*

Tbn.3 *f* *mf* *f*

Bar.1/2 *f* *mf* *f*

Tuba *f* *mf* *f*

S.Bass *f* *mf* *f*

S.D. *f* *mf* *f*

Cymb. *f* *mf* *f*

B.D. *f* *mf* *f*

Fl. *mf*

Ob. *mf*

Bsn.

Cl.1 *mf*

Cl.2 *mf*

Cl.3 *mf*

B.Cl.

A.Sax. *mf*

T.Sax.

Bar.Sax.

Tpt./Cnt.1 *mf*

Tpt./Cnt.2 *mf*

Tpt./Cnt.3 *mf*

Hn.1

Hn.2

Hn.3

Tbn.1

Tbn.2

Tbn.3

Bar.1/2

Tuba

S.Bass

S.D.

Cymb.

B.D.

37 38 **B** 39 40 41 42 43 44 45

Fl.  
Ob.  
Bsn.  
Cl.1  
Cl.2  
Cl.3  
B.Cl.  
A.Sax.  
T.Sax.  
Bar.Sax.  
Tpt./Cnt.1  
Tpt./Cnt.2  
Tpt./Cnt.3  
Hn.1  
Hn.2  
Hn.3  
Tbn.1  
Tbn.2  
Tbn.3  
Bar.1/2  
Tuba  
S.Bass  
S.D.  
Cymb.  
B.D.

Fl.  
Ob.  
Bsn.  
Cl.1  
Cl.2  
Cl.3  
B.Cl.  
A.Sax.  
T.Sax.  
Bar.Sax.  
Tpt./Cht.1  
Tpt./Cht.2  
Tpt./Cht.3  
Hn.1  
Hn.2  
Hn.3  
Tbn.1  
Tbn.2  
Tbn.3  
Bar.1/2  
Tuba  
S.Bass  
S.D.  
Cymb.  
B.D.



Trio



Fl. <sup>2.</sup> <sub>3</sub> *ff* *p*

Ob. <sub>3</sub> *ff* *p*

Bsn. *ff* *p*

Cl.1 <sub>3</sub> *ff* *p espressivo*

Cl.2 <sub>3</sub> *ff* *p espressivo*

Cl.3 <sub>3</sub> *ff* *p espressivo*

B.Cl. *ff* *p*

A.Sax. *ff* *p espressivo*

T.Sax. *ff* *p espressivo*

Bar.Sax. *ff* *p*

Tpt./Cnt.1 <sub>3</sub> *ff* *Div.* *p espressivo* Tacet in concert

Tpt./Cnt.2 <sub>3</sub> *ff* *p espressivo* Tacet in concert

Tpt./Cnt.3 <sub>3</sub> *ff* *p espressivo* Tacet in concert

Hn.1 *ff* *p*

Hn.2 *ff* *p*

Hn.3 *ff* *p*

Tbn.1 *ff* *p*

Tbn.2 *ff* *p*

Tbn.3 *ff* *p*

Bar.1/2 *ff* *Div.* *p espressivo*

Tuba *ff* *p*

S.Bass *ff* *p*

S.D. *ff*

Cymb. *ff*

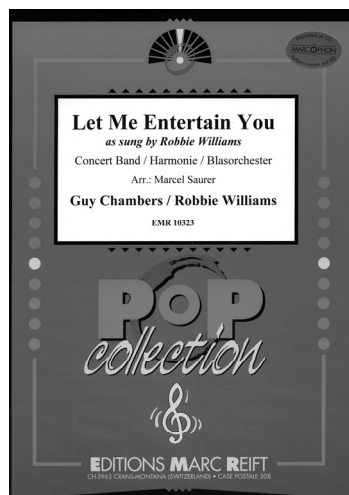
B.D. *ff*

# WIND BAND – HARMONIE – BLASORCHESTER

## LIGHT MUSIC / POP

|           |                                      |                          |
|-----------|--------------------------------------|--------------------------|
| EMR 10545 | Les Adieux                           | VAL                      |
| EMR 10211 | Les Champs Elysées                   | WILSH / DELANOE          |
| EMR 1195  | Les Feuilles Mortes (Solo)           | PREVERT / KOSMA          |
| EMR 1819  | Les Lacs du Connemara                | SARDOU / REVAUX          |
| EMR 10082 | Les Lacs du Connemara (Chorus SATB)  | SARDOU / REVAUX          |
| EMR 1755  | Les Trois Cloches                    | GILLES (Schneiders)      |
| EMR 10046 | Les Trois Cloches (Voice & Chorus)   | GILLES (Richards)        |
| EMR 10001 | Let It Be Me                         | BECAUD (Richards)        |
| EMR 10039 | Let It Swing                         | LÖVLANG (Richards)       |
| EMR 10323 | Let Me Entertain You                 | CHAMBERS / WILLIAMS      |
| EMR 1401  | L'Eté Indien (Trumpet Solo)          | DASSIN (Mortimer)        |
| EMR 10337 | Lightning Fire                       | SAURER                   |
| EMR 1720  | L'important c'est la Rose            | BECAUD (Tailor)          |
| EMR 10663 | Little Cowboy                        | ZANDER (Mortimer)        |
| EMR 1446  | Lofty                                | ARMITAGE                 |
| EMR 1211  | Lollypop Waltz                       | ARMITAGE                 |
| EMR 10189 | Love At Twenty (Der Vogelhändler)    | ZELLER (Tailor)          |
| EMR 10060 | Love Is Blue                         | POPP (Saurer)            |
| EMR 1827  | MacArthur Park                       | WEBB (Thomas)            |
| EMR 10496 | Mazurka Italiana (Accordion Solo)    | MIGLIAVACCA (Oliver)     |
| EMR 1207  | Mellow-Melody (Trumpet Solo)         | ARMITAGE                 |
| EMR 10552 | Memories Of France                   | VAL                      |
| EMR 1785  | Michelle                             | LENNON / McCARTNEY       |
| EMR 1129  | Mi-été et Polka                      | BALISSAT                 |
| EMR 10080 | Money, Money, Money                  | ABBA (Mortimer)          |
| EMR 10081 | Money, Money, Money (Chorus SATB)    | ABBA (Mortimer)          |
| EMR 1171  | Morgens um Sieben                    | LAST (Mortimer)          |
| EMR 1801  | Morning Has Broken (Solo)            | TRADITIONAL (Schneiders) |
| EMR 1247  | Music                                | MILES (Mortimer)         |
| EMR 1576  | Music (Chorus SATB)                  | MILES (Mortimer)         |
| EMR 10476 | Music Box Dancer (Piano Solo)        | KRAMER (Saurer)          |
| EMR 1152  | Music Non-Stop                       | RUGGIERI (Mortimer)      |
| EMR 1328  | My Happiness                         | BERGANTINE / PETERS      |
| EMR 10458 | My Sunny Child                       | HAAS                     |
| EMR 1046  | My Way                               | FRANCOIS (Mortimer)      |
| EMR 1153  | My Way (Solo)                        | FRANCOIS (Schneiders)    |
| EMR 10320 | Nah Neh Nah                          | SCHOUFFS / SCHOOVAERTS   |
| EMR 10216 | Nathalie                             | BECAUD / DELANOE         |
| EMR 10338 | Nights In White Satin                | HAYWARD (Saurer)         |
| EMR 10263 | O mein Papa                          | BURKHARD (Schneiders)    |
| EMR 1787  | Ob-la-di, Ob-la-da                   | LENNON / McCARTNEY       |
| EMR 1142  | Oh No !                              | AGRELL                   |
| EMR 1629  | On A Bright Day                      | TAILOR                   |
| EMR 1442  | On The Back-Beat                     | ARMITAGE                 |
| EMR 1130  | One Moment in Time                   | HAMMOND / BETTIS         |
| EMR 1575  | One Moment in Time (Chorus SATB)     | HAMMOND / BETTIS         |
| EMR 1723  | Only You                             | RAM (Schneiders)         |
| EMR 10686 | Out Of Breath (Alphorn Solo in F)    | SOMMER (Sedlak)          |
| EMR 10486 | Out Of Breath (Alphorn Solo in Gb)   | SOMMER (Sedlak)          |
| EMR 1518  | Parlez-moi d'Amour                   | LENOIR (Tailor)          |
| EMR 10589 | Passepied                            | SCHNEIDERS               |
| EMR 10342 | Pata Pata                            | MAKEBA / RAGOVYOY        |
| EMR 1400  | Penny Lane                           | LENNON / McCARTNEY       |
| EMR 1741  | Petite Fleur (Solo)                  | BECHET (Schneiders)      |
| EMR 10653 | Polka Of Liechtenstein               | KÖTSCHER / LINDT         |
| EMR 1288  | Popcorn                              | ARMITAGE                 |
| EMR 10244 | Quand Il Est Mort Le Poète           | BECAUD (Tailor)          |
| EMR 1826  | Qu'est-ce qu'on attend (Chorus SATB) | HORNEZ / MISRAKI         |
| EMR 1529  | Qu'est-ce qu'on attend (Male Chorus) | HORNEZ / MISRAKI         |
| EMR 1554  | Qu'est-ce qu'on attend (Solo)        | HORNEZ / MISRAKI         |

|           |   |                                 |
|-----------|---|---------------------------------|
| EMR 10297 | Raclette Party  | SCHNEIDERS (Saurer)             |
| EMR 10194 | Rain And Tears  | PANATHANASSIOU                  |
| EMR 10305 | Ramona  | WAYNE (Schneiders)              |
| EMR 1481  | Rosamunde   | VEJVODA (Schneiders)            |
| EMR 1294  | Royal Blue  | ARMITAGE                        |
| EMR 10625 | Russian Impressions                                       | VAL                             |
| EMR 1732  | Sailing   | SUTHERLAND (Schneiders)         |
| EMR 1964  | Sandpaper concerto (Sandpaper Solo)                       | TAILOR                          |
| EMR 10648 | Say Goodbye   | KÖTSCHER (Suba)                 |
| EMR 1483  | Schneewalzer  | TRADITIONAL (Schneiders)        |
| EMR 10180 | Serenata Amorosa  | TOSELLI (Saurer)                |
| EMR 10179 | Show Time   | BUTTALL                         |
| EMR 1805  | Silberfäden (Solo)  | DANKS (Schneiders)              |
| EMR 1444  | Silly-Willy   | ARMITAGE                        |
| EMR 10662 | Smart Boy   | WEBER (King)                    |
| EMR 1739  | Soleado (Solo)  | DAMMICO / BEMBO                 |
| EMR 1488  | Souvenir de Russie  | SCHNEIDERS                      |
| EMR 10587 | Souvenirs Of Switzerland                                  | SCHNEIDERS                      |
| EMR 1537  | Spanish Eyes  | KAEMPFFERT (Tailor)             |
| EMR 1184  | Superstar   | CARPENTERS (Mortimer)           |
| EMR 10525 | Swanee  | GERSHWIN (Bellini)              |
| EMR 10810 | Swiss Lady (Alphorn Solo in F)                            | REBER (Saurer)                  |
| EMR 10382 | Swiss Lady (Alphorn Solo in Gb)                           | REBER (Saurer)                  |
| EMR 10403 | Take Me Home, Country Roads                               | DANOFF / DENVER (King)          |
| EMR 10387 | Take Me Home, Country Roads (Chorus SATB)                 | DANOFF / NIVERS / DENVER (King) |
| EMR 1221  | Teddy Bear  | ARMITAGE                        |
| EMR 1456  | Teeny-Weeny Waltz   | ARMITAGE                        |
| EMR 1292  | The Butterfly Waltz                                       | ARMITAGE                        |
| EMR 10655 | The Emperor's Monument                                    | POSEL (Andrews)                 |
| EMR 1245  | The Final Countdown                                       | EUROPE / TEMPEST                |
| EMR 10198 | The Great Pretender                                       | RAM (Tailor)                    |
| EMR 1068  | The Happy Twins (Trumpet Duet)                            | ARMITAGE                        |
| EMR 1863  | The Happy Whistler (Flute Solo)                           | ARMITAGE                        |
| EMR 1235  | The House Of The Rising Sun                               | TRADITIONAL (Armitage)          |
| EMR 10000 | The Joust   | GILLIS (Mortimer)               |
| EMR 10052 | The Lion Sleeps Tonight                                   | CREATORE / PERETTI              |
| EMR 10247 | The Power Of Love   | DETMAN / MENDE / RUSH           |
| EMR 10658 | The Student's Return                                      | KÖTSCHER / LINDT                |
| EMR 10018 | The Time Of My Life (Dirty Dancing)                       | PREVITE / DENICOLA              |
| EMR 1405  | Time To Say Goodbye                                       | SARTORI (Mortimer)              |
| EMR 1577  | Time To Say Goodbye (Chorus SATB)                         | SARTORI (Mortimer)              |
| EMR 1577M | Time To Say Goodbye (Male Chorus)                         | SARTORI (Mortimer)              |
| EMR 1123  | Trumpet Playtime (Trumpet Quartet)                        | ARMITAGE                        |
| EMR 10357 | Tzena, Tzena, Tzena                                       | MIRON / GROSSMAN                |
| EMR 10007 | Unchained Melody (Ghost)                                  | NORTH / ZARET (Mortimer)        |
| EMR 1440  | Up And Away   | ARMITAGE                        |
| EMR 1448  | Up And Down   | ARMITAGE                        |
| EMR 10464 | Venus   | LEEUEWEN (Saurer)               |
| EMR 1477  | Vive la France  | TAILOR                          |
| EMR 10135 | Vivo Per Lei  | PANCERI / MENGALI               |
| EMR 10379 | Vivo Per Lei (Chorus SATB)                                | PANCERI / MENGALI               |
| EMR 1522  | Volare  | MODUGNO (Tailor)                |
| EMR 1115  | Waltz For Daisy   | ARMITAGE                        |
| EMR 1848  | Watering The Periwinkles                                  | SCHNEIDERS                      |
| EMR 10412 | (Hosepipe or Alphorn Solo in F)                           | SCHNEIDERS                      |
| EMR 1255  | Watering The Periwinkles (Hosepipe or Alphorn Solo in Gb) | QUEEN / MERCURY                 |
| EMR 1580  | We Are The Champions                                      | QUEEN / MERCURY                 |
| EMR 1780  | We Are The Champions (Chorus SATB)                        | JACKSON / RICHIE                |
| EMR 1865  | We Are The World  | JACKSON / RICHIE                |
| EMR 10056 | We Are The World (Chorus SATB)                            | BOHLEN (Saurer)                 |
| EMR 10057 | We Have A Dream   | BOHLEN (Saurer)                 |
| EMR 1188  | We Have A Dream (Chorus SATB)                             | CARPENTERS (Mortimer)           |
| EMR 1849  | We've Only Just Begun                                     | THIELE / WEISS (Tailor)         |
| EMR 10169 | What A Wonderful World                                    | THIELE / WEISS (Saurer)         |
| EMR 1727  | What A Wonderful World (Solo Voice)                       | BECAUD (Schneiders)             |
| EMR 10398 | What Now My Love  | SCHOOVAERTS/SCHOUFFS            |
| EMR 1792  | What's A Woman  | MAY (Mortimer)                  |
| EMR 1524  | Who Wants To Live Forever (Highlander)                    | SCHNEIDERS                      |
| EMR 10656 | Wiener Walzer Medley                                      | POSEL (Bellini)                 |
| EMR 1383  | Wine Of Tokay   | HAM / EVANS (Mortimer)          |
| EMR 1282  | Without You   | MORALI (Mortimer)               |
| EMR 1784  | Y.M.C.A.  | LENNON / McCARTNEY              |
| EMR 10288 | Yesterday   | MAGLIOCCO                       |
| EMR 10288 | Zuger Schottisch  |                                 |



**A World of Music...**

**PRINT & LISTEN  
DRUCKEN & ANHÖREN  
IMPRIMER & ECOUTER**



**www.reift.ch**