

FULL CONDUCTOR SCORE  
Score Cat. #012-4395-01

BARNHOUSE CONCERT BAND SERIES

# BEYOND THE COSMOS

**DAVID SHAFFER**

For reference only  
Not valid for performance.



**C.L. BARNHOUSE COMPANY®**

Music Publishers • Oskaloosa, IA 52577  
[www.barnhouse.com](http://www.barnhouse.com)

# Beyond the Cosmos

## INSTRUMENTATION

Full Conductor Score .....	1
Flute, Piccolo .....	10
Oboe .....	2
1st Bb Clarinet .....	6
2nd Bb Clarinet .....	6
Bb Bass Clarinet .....	2
Bassoon .....	2
1st Eb Alto Saxophone .....	3
2nd Eb Alto Saxophone .....	3
Bb Tenor Saxophone .....	2
Eb Baritone Saxophone .....	1
1st Bb Trumpet .....	5
2nd Bb Trumpet .....	5
F Horn .....	4
1st Trombone .....	3
2nd Trombone .....	3
Euphonium (Baritone) BC .....	2
Euphonium (Baritone) TC .....	2
Tuba .....	4
Mallets: Chimes, Bells, Vibraphone .....	3
Timpani .....	1
Percussion 1: Snare Drum, Bass Drum .....	3
Percussion 2: Suspended Cymbal, Crash Cymbals .....	2
Percussion 3: Wind Chimes, Sleigh Bells, Ratchet .....	3

## PROGRAM NOTES

Inspired by the heavens and what lies beyond, the composer has created a magnificent composition capturing the beauty and awe of the cosmos. A powerful and majestic opening leads to a whimsical melodic statement in the saxophones, which soon broadens to involve the full ensemble in a dramatic musical moment. A lush lyrical middle section creates the perfect reflection of cosmic beauty leading to a dramatic and exciting conclusion.

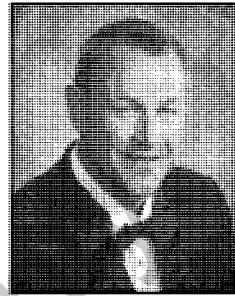
## REHEARSAL NOTES

The entire opening (m. 1 through m. 26) should be bold, beautiful and dramatic. Emphasis of the alterations in tempo will maximize the musical potential. The main theme at m. 32 should be light and whimsical. When the clarinets and bassoon enter at m. 40 this should be very staccato. The bridge starting at m. 40 should emphasize the half notes harmonies. Take care at m. 60 to balance each musical line. The slower section at m. 82 should use, if at all possible, solo oboe. As "Cantabile" indicates, work for flowing musical lines especially in all of the accompaniment instruments. The recapitulation of the main themes begins at m. 120 and should be played with the same intensity and energy as the opening.

I hope you enjoy preparing and performing **Beyond the Cosmos**.

- David Shaffer

## ABOUT THE COMPOSER



David Shaffer was born in Columbus, Ohio and attended Grove City High School. He holds a Bachelor Degree from the Ohio State University and a Master of Music Degree from Miami University (Ohio.) Mr. Shaffer has taught in the Ohio schools of Hamilton, Northridge, and Wyoming. Mr. Shaffer has been associated with the Miami University Marching Band for 31 years as Graduate Assistant Director (1978-80), Assistant Director (1980-97) and Director (1997 to date.) Under his direction, the Miami Band has performed twice at the University of Michigan, West Virginia University and the University of Cincinnati. In 2000 and 2005, the Miami Band performed a combined half-time show with the Ohio State University Marching Band. The Miami Band has performed for seven regional Bands of America Contests and annually hosts these events at Miami University in Oxford, Ohio. In 2003 the Miami Band performed as the "Santa Band" in the 77th annual Macy's Thanksgiving Day Parade in New York City.

In addition to his involvement with the Miami University Marching Band, Mr. Shaffer has over 350 compositions and arrangements in print. His compositions have been used at clinics and music festivals around the world and have been placed on contest required-performance lists in the United States, Canada, Europe, Australia, and Asia. Mr. Shaffer has been the recipient of the ASCAP Standard Award in Music Composition for 18 years.

Under the direction of Mr. Shaffer, the Wyoming High School String Orchestra performed as the opening group at the 1984 Mid-West National Band and Orchestra Director's Clinic in Chicago. Additional Mid-West conducting appearances were in 2000 and 2001 when Mr. Shaffer guest conducted his compositions with the Robinson School Band, Fairfax, Va., and the South Central Middle School Band, Cartersville, Ga. In November 2007, Mr. Shaffer was invited to conduct his composition Purple Heart with the Air Force Band of Flight, Dayton, Ohio, in honor of former band member Michael Cifuentes, who was killed in Iraq in August, 2005.

Mr. Shaffer is in demand as a conductor for new music reading clinics, music festivals, and music education seminars. During the summer of 1986 and 1992, he served as instrumental director for the Saskatchewan School of Fine Arts. In February of 1997 he conducted a program of his music, with the China Youth Corps Band in the National Concert Hall, Taipei, Taiwan. Mr. Shaffer is a past adjudicator for Drum Corps International and Drum Corps Midwest and has judged championship events for both organizations.

His professional affiliations include; Phi Mu Alpha, Kappa Kappa Psi, Phi Beta Mu, Music Educators National Convention, Ohio Music Education Association, Drum Corps Midwest & International Judges Guild, and American Society of Composers, Authors, and Publishers (ASCAP).

## CD Recording Available



WFR385

### THE ADVENTURE BEGINS!

*The Washington Winds, Edward Petersen, conductor*

**CONTENTS:** *The Adventure Begins!* (Matt Conaway), *The Spirit of the Solitary Defender* (Lisa Galvin), *Liberty Fleet March* (Karl L. King / arr. James Swearingen), *Factory Riffs* (Matt Conaway), *Orpheus Overture* (Jacques Offenbach / arr. Larry Neeck), *Beyond the Cosmos* (David Shaffer), *Oh, What Fun!* - *The Ultimate Christmas March* (James Swearingen), *A Song of Goodbye* (Andrew Glover), *Fury Of The Gods* (Rob Romeyn), *Saxes On The Seas* (Matt Conaway), *O Come All Ye Faithful* (arr. Paul Clark), *The Siege of Arundel* (Jonathan McBride), *Chain Reaction* (David Shaffer), *Rock The Halls With Drums And Cowbell* (Ed Huckeby), *Pembroke Castle* (Ed Huckeby), *Fly-By!* (Matt Conaway), *In Search of the Lost Ship* (James Swearingen), *The Trombone King* (Karl L. King / arr. Andrew Glover), *The Heart of Christmas* (Rob Romeyn), *Visions of Glory* (David Shaffer), *Three Irish Folksongs* (Anne McGinty)



Flute

Oboe

Bssn.

Clar. 1

Clar. 2

Bs. Cl.

A. Sax. 1

A. Sax. 2

T. Sax.

Bari. Sax.

Tpt. 1

Tpt. 2

F Horn

Trom. 1

Trom. 2

Euph.

Tuba

Timp.

Mlts.

Perc. 1

Perc. 2

Perc. 3

9 10 11 12 13 14 15 16

molto rit. . . . .

Flute

Oboe

Bssn.

Clar. 1

Clar. 2

Bs. Cl.

A. Sax. 1

A. Sax. 2

T. Sax.

Bari. Sax.

Tpt. 1

Tpt. 2

F Horn

Trom. 1

Trom. 2

Euph.

Tuba

Timp.

Mlts.

Perc. 1

Perc. 2

Perc. 3

17 18 19 20 21 22 23 24 25

Flute

Oboe

Bsn.

Clar. 1

Clar. 2

Bs. Cl.

A. Sax. 1

A. Sax. 2

T. Sax.

Bari. Sax.

Tpt. 1

Tpt. 2

F Horn

Trom. 1

Trom. 2

Euph.

Tuba

Timp.

Mlts.

Perc. 1

Perc. 2 (choke)

Perc. 3 (sleigh bells)

40

Flute

Oboe

Bssn.

Clar. 1

Clar. 2

Bs. Cl.

A. Sax. 1

A. Sax. 2

T. Sax.

Bari. Sax.

40

Tpt. 1

Tpt. 2

F Horn

Trom. 1

Trom. 2

Euph.

Tuba

Timp.

Mts.

Perc. 1

Perc. 2

Perc. 3

Bells

lightly

choke

34 35 36 37 38 39 40 41

Flute

Oboe

Bsn.

Clar. 1

Clar. 2

Bs. Cl.

A. Sax. 1

A. Sax. 2

T. Sax.

Bari. Sax.

Tpt. 1

Tpt. 2

F Horn

Trom. 1

Trom. 2

Euph.

Tuba

Timp.

Mlts.

Perc. 1

Perc. 2

Perc. 3



Flute

Oboe

Bssn.

Clar. 1

Clar. 2

Bs. Cl.

A. Sax. 1

A. Sax. 2

T. Sax.

Bari. Sax.

Tpt. 1

Tpt. 2

F Horn

Trom. 1

Trom. 2

Euph.

Tuba

Timp.

Mlts.

Perc. 1

Perc. 2

Perc. 3

49 50 51 52 53 54 55 56

Flute *mf*

Oboe *mf*

Bsn. *f*

Clar. 1 *mf*

Clar. 2 *mf*

Bs. Cl. *f*

A. Sax. 1 *f*

A. Sax. 2 *f*

T. Sax. *f*

Bari. Sax. *f*

Tpt. 1 *f*

Tpt. 2 *f*

F Horn *f*

Trom. 1 *mf*

Trom. 2 *mf*

Euph. *mf*

Tuba *mf*

Timp.

Mlts. *f*

Perc. 1 *lightly*  
*p* *mp*

Perc. 2 *choke*  
*p*

Perc. 3 *sleigh bells*

57 58 *mf* 59 60 61 62 63 64





Slightly faster

82 *Cantabile* (♩ = 86)

oboe solo w/expression

Flute *f*

Oboe *f* solo w/expression

Bssn. *mp*

Clar. 1 *mp*

Clar. 2 *mp* div.

Bs. Cl. *mp*

A. Sax. 1 *mp* all

A. Sax. 2 *mp*

T. Sax. *mp*

Bari. Sax. *mp*

82 *Cantabile*

Tpt. 1

Tpt. 2

F Horn *mp*

Trom. 1 *mp*

Trom. 2 *mp*

Euph. *mp*

Tuba *p* one only *all*

Timp.

Vibraphone

Mts. *mp*

Perc. 1

Perc. 2 *p* *m*

Perc. 3

82 83 84 85 86 87 88 89

90 *Piu Mosso* (♩ = 99)

*Broaden*

97 *Freely*

Flute *play* *f*

Oboe *f*

Bssn. *f*

Clar. 1 *f* solo *sub p*

Clar. 2 *f* solo *sub p*

Bs. Cl. *f*

A. Sax. 1 *f* solo *sub p*

A. Sax. 2 *f* solo *sub p*

T. Sax. *f* solo *sub p*

Bari. Sax. *f*

90 *Piu Mosso*

*Broaden*

97 *Freely*

Tpt. 1 *f*

Tpt. 2 *f*

F Horn *f*

Trom. 1 *f*

Trom. 2 *f*

Euph. *f*

Tuba *f*

Timp. *p*

Mlts. *p*

Perc. 1 *p*

Perc. 2 *p*

Perc. 3 *p*

90 91 92 93 94 95 96 97

102 a tempo (♩ = 82)

rit.

oboe solo w/expression

Flute

Oboe

Bssn.

vibe solo

all

Clar. 1

Clar. 2

Bs. Cl.

all

div.

horn cue

A. Sax. 1

A. Sax. 2

T. Sax.

Bari. Sax.

rit.

102 a tempo

Tpt. 1

Tpt. 2

F Horn

Trom. 1

Trom. 2

Euph.

Tuba

Timp.

Mits.

Perc. 1

Perc. 2

Perc. 3

98

99

100

101

102

103

104

105

Flute

Oboe

Bsn.

Clar. 1

Clar. 2

Bs. Cl.

A. Sax. 1

A. Sax. 2

T. Sax.

Bari. Sax.

Tpt. 1

Tpt. 2

F Horn

Trom. 1

Trom. 2

Euph.

Tuba

Timp.

Mlts.

Perc. 1

Perc. 2

Perc. 3

one only

two only

all

To Bells

lightly

hit w/stick

*p* *pp* *f* *ff* *sf* *mp* *p*



Flute

Oboe

Bsn.

Clar. 1

Clar. 2

Bs. Cl.

A. Sax. 1

A. Sax. 2

T. Sax.

Bari. Sax.

Tpt. 1

Tpt. 2

F Horn

Trom. 1

Trom. 2

Euph.

Tuba

Timp.

Mlts.

Perc. 1

Perc. 2

Perc. 3  
sleigh bells

Flute

Oboe

Bssn.

Clar. 1

Clar. 2

Bs. Cl.

A. Sax. 1

A. Sax. 2

T. Sax.

Bari. Sax.

Tpt. 1

Tpt. 2

F Horn

Trom. 1

Trom. 2

Euph.

Tuba

Timp.

Mlts.

Perc. 1

Perc. 2

Perc. 3

div.

*mp*

*mp*

*mp*

*mp*

*f*

*mp*

*p*

121

122

123

124

125

126

127

128

Flute

Oboe

Bssn.

Clar. 1

Clar. 2

Bs. Cl.

A. Sax. 1

A. Sax. 2

T. Sax.

Bari. Sax.

128

opt. solo

Tpt. 1

Tpt. 2

F Horn

Trom. 1

Trom. 2

Euph.

Tuba

Timp.

Mits.

Perc. 1

Perc. 2

Perc. 3

128

129

130

131

132

133

This page contains a musical score for measures 134 through 140. The instruments listed on the left are: Flute, Oboe, Bassoon, Clarinet 1, Clarinet 2, Bass Clarinet, Alto Saxophone 1, Alto Saxophone 2, Tenor Saxophone, Baritone Saxophone, Trumpet 1, Trumpet 2, French Horn, Trombone 1, Trombone 2, Euphonium, Tuba, Timpani, Miltary Snare, Percussion 1, Percussion 2, and Percussion 3. The score includes various musical notations such as notes, rests, dynamics (e.g., *f*, *fp*, *ff*, *p*), and articulation marks. A large watermark 'For reference only' is overlaid diagonally across the page. A small box with the number '136' is present above the Trumpet 1 staff in measure 136. Percussion 2 has a 'hit w/stick' instruction in measure 138.

Flute  
mf

Oboe  
mf

Bsn.

Clar. 1  
mf

Clar. 2  
mf

Bs. Cl.

A. Sax. 1  
fp

A. Sax. 2  
fp

T. Sax.  
fp

Bari. Sax.  
fp

Tpt. 1  
fp

Tpt. 2  
sf

F Horn  
fp

Trom. 1  
sf

Trom. 2  
sf

Euph.  
sf

Tuba  
fp

Timp.  
sf

Mts.

Perc. 1  
lightly

Perc. 2  
choke

Perc. 3  
sicigh bells

mf

148

Flute *mf*

Oboe *mf*

Bsn. *f*

Clar. 1 *mf*

Clar. 2 *mf*

Bs. Cl. *f*

A. Sax. 1 *f*

A. Sax. 2 *f*

T. Sax. *f*

Bari. Sax. *f*

148

Tpt. 1

Tpt. 2

F Horn

Trom. 1 *mf*

Trom. 2 *mf*

Euph. *mf*

Tuba *mf*

Timp.

Mlts. *f*

Perc. 1

Perc. 2

Perc. 3

148

149

150

151

152

153

156

Flute

Oboe

Bssn.

Clar. 1

Clar. 2

Bs. Cl.

A. Sax. 1

A. Sax. 2

T. Sax.

Bari. Sax.

Tpt. 1

Tpt. 2

F Horn

Trom. 1

Trom. 2

Euph.

Tuba

Timp.

Mts.

Perc. 1

Perc. 2

Perc. 3

hit w/stick

*ff*

*f*

*p*

154 155 156 157 158 159

Flute

Oboe

Bsn.

Clar. 1

Clar. 2

Bs. Cl.

A. Sax. 1

A. Sax. 2

T. Sax.

Bari. Sax.

Tpt. 1

Tpt. 2

F Horn

Trom. 1

Trom. 2

Euph.

Tuba

Timp.

Mits.

Perc. 1

Perc. 2

Perc. 3

*f*

*sfz*

*ff*

*fp*

hit w/ stick

ratchet

160 161 162 163 164 165