

# Don Quichotte

Concert Band / Harmonie / Blasorchester

Marco Forlani

EMR 1474

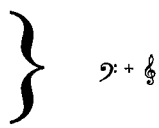
## Instrumentation

### Harmonie / Concert Band / Symphonic Band / Fanfare

- 1 Score
- 6 Flute & Piccolo
- 1 Oboe
- 1 Bassoon
- 5 Clarinet I
- 5 Clarinet II
- 5 Clarinet III
- 1 Bass Clarinet
- 2 Alto Saxophone I
- 2 Alto Saxophone II
- 2 Tenor Saxophone
- 1 Baritone Saxophone
- 3 Trumpet I
- 3 Trumpet II
- 3 Trumpet III
- 2 Horn I F
- 2 Horn II F
- 2 Horn I E<sup>b</sup>
- 2 Horn II E<sup>b</sup>
- 2 Trombone I
- 2 Trombone II
- 1 Bass Trombone
- 2 Baritone I + II
- 2 C Tuba
- 1 String Bass
- 1 Snare Drum
- 1 Cymbals / Bass Drum
- 1 Triangel / Susp. Cymbal
- 1 Glockenspiel

#### Additional Parts

- 1 E<sup>b</sup> Clarinet
- 1 B<sup>b</sup> Soprano Saxophone
- 1 E<sup>b</sup> Cornet
- 1 Trombone I B<sup>b</sup>
- 1 Trombone II B<sup>b</sup>
- 1 Bass Trombone B<sup>b</sup>
- 2 Baritone I + II B<sup>b</sup>
- 2 E<sup>b</sup> Bass
- 2 B<sup>b</sup> Bass



#### Fanfare Parts

- 3 Flugelhorn I
- 3 Flugelhorn II
- 3 Flugelhorn III

Combined score  
for both formations



dédié à la Lyre d'Echallens  
**Don Quichotte**

Marco Forlani

Allegro (♩ = 120)

8

Fl./Ob.  
Picc.

Bsn./B. Cl.  
B. Sax., Eb Bar.

Cl. 1

Cl. 2/3

A. Sax.

T. Sax.

E♭ Cnt.

Solo Cnt.

Rep./Flgh.

Cnts. 2/3

Tpt. 1

Tpts. 2/3

Hrn. in F

Solo E♭ Horn

1st & 2nd E♭ Hrn.

1st & 2nd Bar./Thn.

1st & 2nd B♭ Tbn.

Bass Tbn.

Euph. (BB)  
Bar. (WB)

Basses

Snare Dr.

Cymb.  
Bass Dr.

Trgl.,  
Susp. Cymb.

Gisp.

16

18

Fl./Ob.  
Picc.

Bsn./B. Cl.  
B. Sax., Eb Bar.

Cl. 1

Cl. 2/3

A. Sax.

T. Sax.

E♭ Cnt.

Solo Cnt.

Rep./Flgh.

Cnts. 2/3

Tpt. 1

Tpts. 2/3

Hrn. in F

Solo E♭ Horn

1st & 2nd E♭ Hrn.

1st & 2nd Bar./Thn.

1st & 2nd B♭ Tbn.

Bass Tbn.

Euph. (BB)  
Bar. (WB)

Basses

Snare Dr.

Cymb.  
Bass Dr.

Trgl.,  
Susp. Cymb.

Gisp.

24

Wind Band

Fl/Ob. Picc.

Bsn./B. Cl. B. Sax., Eb Bass

Cl. 1

Cl. 2/3

A. Sax.

T. Sax.

Brass Band

Eb Cnt.

Solo Cnt.

Rep./Flgh.

Cnts. 2/3

Wind Band

Tpt. 1

Tpts. 2/3

Hns. in F

Brass Band

Solo Eb Horn

1st & 2nd Eb Hns.

1st & 2nd Bar./Tbn.

1st & 2nd Bb Tbn.

Bass Tbn.

Euph. (BB) Bar. (WB)

Basses

Snare Dr.

Cymb. Bass Dr.

Trgl., Susp. Cymb.

Gisp.

*mf cresc.*

*f*

32

34

Wind Band

Fl/Ob. Picc.

Bsn./B. Cl. B. Sax., Eb Bass

Cl. 1

Cl. 2/3

A. Sax.

T. Sax.

Brass Band

Eb Cnt.

Solo Cnt.

Rep./Flgh.

Cnts. 2/3

Wind Band

Tpt. 1

Tpts. 2/3

Hns. in F

Brass Band

Solo Eb Horn

1st & 2nd Eb Hns.

1st & 2nd Bar./Tbn.

1st & 2nd Bb Tbn.

Bass Tbn.

Euph. (BB) Bar. (WB)

Basses

Snare Dr.

Cymb. Bass Dr.

Trgl., Susp. Cymb.

Gisp.

*f*

*f*