

Happy Lehár

(Niemand spielt Dich so wie ich)

Melodienfolge von **James Last**

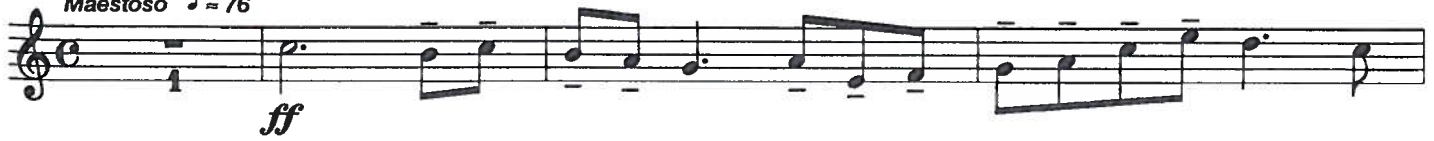
Bearbeitung:
Manfred Schneider

1. Medley

1. Trompete in B^b

1. Flügelhorn in B^b

Maestoso $\text{♩} = 76$



① Freunde, das Leben ist lebenswert
aus der musik. Komödie "Giuditta"



ad lib. **2** Da geh' ich zu Maxim
vi - aus der Operette " Die lustige Witwe "

Musical staff for the first piece, 'Da geh' ich zu Maxim'. It features a treble clef, a key signature of one flat (B-flat), and a 2/4 time signature. The melody is marked with accents and slurs. A double bar line is followed by a thick black bar indicating a measure rest for 16 measures.

16

- de

Musical staff labeled '2a' for the second piece. It continues the melody with various rhythmic values and slurs.

Musical staff labeled '2b' for the second piece, showing further melodic development.

Musical staff for the third piece, 'Ach, die Weiber'. It begins with a treble clef, a key signature of one flat, and a 2/4 time signature. The melody is marked with accents and slurs. A double bar line is followed by a thick black bar indicating a measure rest for 10 measures.

10

3 Ach, die Weiber
aus der Operette " Die lustige Witwe "

Musical staff labeled '3a' for the third piece, showing the beginning of the melody.

Musical staff labeled '3b' for the third piece, featuring a triplet of eighth notes.

Musical staff for the third piece, continuing the melodic line.

Musical staff for the third piece, ending with a double bar line and a key signature change to one sharp (F#).

3a

Musical staff for the third piece, continuing the melody.

Musical staff for the third piece, continuing the melody.

3b

Musical staff for the third piece, continuing the melody.

Musical staff for the third piece, continuing the melody.

Musical staff for the third piece, ending with a triplet and a forte (ff) dynamic marking.

ff