

1. Trompete in B^b (B^b Trumpet 1)

Tempo 1 (8 Takte=11 sec.)
Half Time Feel

12 3 *mp*

3 *mf*

14 2 *f* 2

4 *f* *rit.* 6 *ff*

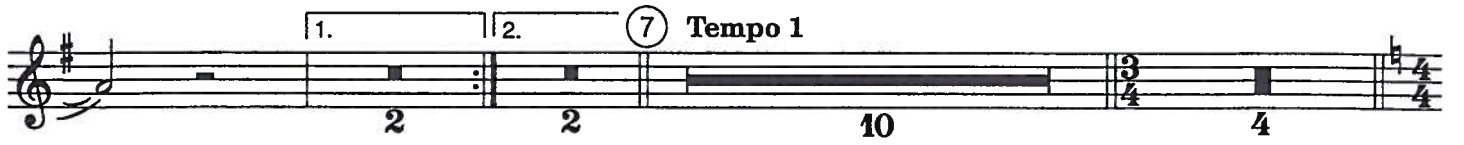
15 *mf*

1 1

1. 2.

1.x play
2.x tacet

play 1.x only
(2.x tacet)



Tempo 3 (8 Takte=10 sec.)

