



Molenaar Edition

Tulpen uit Amsterdam

R. Arnic

Jaroc

Art.nr: 011054030

Difficulty: A

Concert Band

Walzes

Colofon

Molenaar Edition BV

Industrieweg 23
NL 1521 ND Wormerveer
the Netherlands
Phone: +31 (0)75 - 628 68 59
Fax: +31 (0)75 - 621 49 91
Email: office@molenaar.com
Website: www.molenaar.com

© Molenaar Edition BV - Wormerveer - the Netherlands

Copying of sheetmusic from this booklet is illegal.

Mini - Score

www.molenaar.com

Molenaar Edition

Instrumentation "Tulpen uit Amsterdam"

H + F

- 6 Flute/Oboe
- 3 E♭ Clarinet/E♭ Flügelhorn/Alto Saxophone
- 8 Solo+Clarinet I/Soprano Saxophone
- 16 Clarinet/Flügelhorn/Cornet-Trumpet II+III
- 4 Tenor Saxophone/Baritone I
- 1 Baritone Saxophone
- 9 Solo+Flügelhorn I/Cornet-Trumpet I
- 2 Horn I+III E♭
- 2 Horn II+IV E♭
- 2 Baritone II
- 3 Trombone I/Baritone-Euphonium
- 2 Trombone II+III
- 2 E♭ Bass
- 2 B♭ Bass
- 4 Basses (Tuba) C
- 3 Percussion
- 1 Condensed Score

H = Harmonie-Concert Band
F = Fanfare

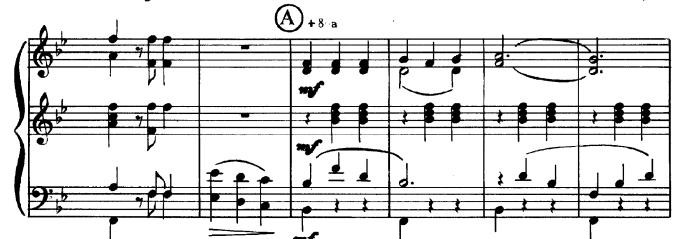
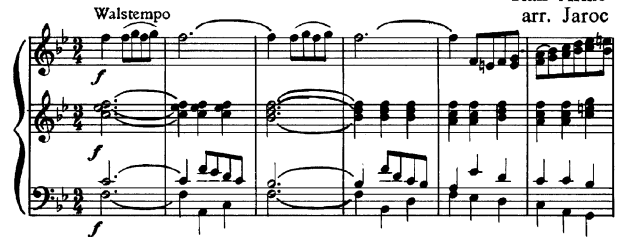
Nota van deze uitgave mag worden vervoerrechtig en/of openbaar gemaakt door middel van druk, fotocopy, microfilm of welke andere wijze ook, zonder voorafgaande toestemming van de uitgever.
No part of this book may be produced in any form of print, fotocopy, microfilm or any other means without written permission of the publisher.

03.1052.03



Tulpen uit Amsterdam

Ralf Arnic
arr. Jaroc



© Copyright 1956 by Beboton Verlag, Hamburg
Copyright 1956 by World-Music Co Brussels (for Benelux and dep.
Internationale Muziek Co Amsterdam
Authorised Edition Molenaar N.V., Wormerveer Holland



Musical score for page 2, measures 1-12. The score is written for piano in a key signature of two flats (B-flat and E-flat). It features a treble and bass clef. The right hand plays chords and melodic lines, while the left hand provides a bass line. A section marker 'B' is present at the beginning of the second system. A large, semi-transparent watermark reading 'Mini Score' is overlaid on the bottom right of the page.

Musical score for page 3, measures 1-12. The score continues from page 2. It features a treble and bass clef. The right hand plays chords and melodic lines, while the left hand provides a bass line. A section marker 'D' is present at the beginning of the third system. A large, semi-transparent watermark reading 'Mini Score' is overlaid on the bottom right of the page.

Musical score for page 4, measures 1-12. The score continues from page 3. It features a treble and bass clef. The right hand plays chords and melodic lines, while the left hand provides a bass line. A section marker 'E' is present at the beginning of the second system. A first ending bracket is shown over the final two measures of the page. A large, semi-transparent watermark reading 'Mini Score' is overlaid on the bottom right of the page.