



For Jerryl Davis and Jeremy Stovall

Saxophone Stew

Sax-O-Matics

PATRICK ROSZELL (ASCAP)

INSTRUMENTATION

- 1 Conductor
- 10 Flute
- 2 Oboe
- 10 B \flat Clarinet
- 2 B \flat Bass Clarinet
- 6 E \flat Alto Saxophone
- 4 B \flat Tenor Saxophone
- 2 E \flat Baritone Saxophone
- 8 B \flat Trumpet
- 4 F Horn

- 6 Trombone/Baritone/Bassoon
- 2 Baritone Treble Clef
(World Part Trombone in B \flat Treble Clef)
- 4 Tuba
- 1 Mallet Percussion
(Bells)
- 1 Optional Timpani
(Tune: C, F)
- 3 Percussion 1
(Ride Cymbal/Snare Drum, Bass Drum)
- 2 Percussion 2
(Tambourine, Suspended Cymbal)

WORLD PARTS

Available for download from
www.alfred.com/worldparts

- Horn in E \flat
- Trombone/Baritone in B \flat Bass Clef
- Tuba in E \flat Bass Clef
- Tuba in E \flat Treble Clef
- Tuba in B \flat Bass Clef
- Tuba in B \flat Treble Clef

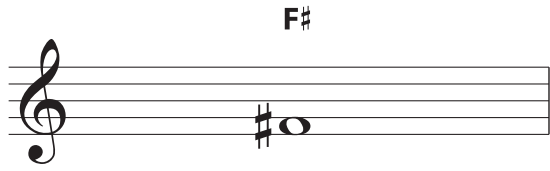
PROGRAM NOTES

As you may suspect from the title, the saxophones are featured in this bluesy tune. Their feature spotlight comes with a cost since they have had to learn new fingerings for some of their familiar notes. Bravo!

NOTES TO THE CONDUCTOR

The concept of this piece is to aid in learning some of the more common alternate fingerings for F \sharp and B \flat in the saxophone family. Notes with an asterisk (*) placed above them will benefit from the use of alternate fingerings, particularly when a slur is encountered. The director will be at liberty to decide which fingerings to use. A chart indicating alternate fingerings has been placed on the second page of the score and on the back of the part as a reference for all saxophones.

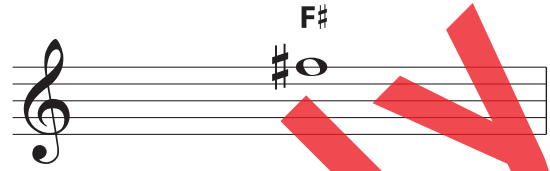
Patrick Roszell



Standard



Alternate



Standard



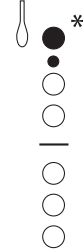
Alternate



Standard



Alternate



Bis Key
(Alternate)

Preview Only
Legal Use Requires Purchase

for Jerryl Davis and Jeremy Stovall
Saxophone Stew

Sax-O-Matics

By Patrick Roszell (ASCAP)

FULL SCORE

Approx. Duration - 2:00

Tempo di fingers ♩ = 120

Flute

Oboe

B♭ Clarinet

B♭ Bass Clarinet

E♭ Alto Saxophone

B♭ Tenor Saxophone

E♭ Baritone Saxophone

B♭ Trumpet

F Horn

Trombone/Baritone/Bassoon

Tuba

Mallet Percussion (Bells)

Optional Timpani

Percussion 1 (Ride Cymbal/Snare Drum, Bass Drum)

Percussion 2 (Tambourine, Suspended Cymbal)

Tempo di fingers ♩ = 120

Tune: C, F

p *mf* *p* *mf*

p *mf* *p* *mf*

p *mf* *p* *mf*

p *mf* *p* *mf*

p *mf* *p* *mf*

p *mf* *p* *mf*

p *mf* *p* *mf*

p *mf* *p* *mf*

p *mf* *p* *mf*

p *mf* *p* *mf*

1 2 3 4

* Use alternate fingering on back of part.

42147S

© 2014 BELWIN-MILLS PUBLISHING CORP.,
a division of ALFRED MUSIC
All Rights Reserved including Public Performance



Purchase a full-length
performance recording!
alfred.com/downloads

Fl. *mf* *f*

Ob. *mf* *f*

Cl. *f* *f*

B. Cl. *mf* *f*

A. Sax. *f* *f*

T. Sax. *mf* *f* *f*

Bar. Sax. *f* *f*

Tpt. *mf* *f*

Hn. *mf* *f* *f*

Tbn./Bar./Bsn. *mf* *f*

Tuba *mf* *f*

Mlt. Perc. *mf* *f*

Timp.

Perc. 1 *mf* *f*

Perc. 2 *mf* *f*

Suspended Cymbal

42147S

5 6 7 8

PREVIEW ONLY
Legal Use Requires Purchase

19

Fl.

Ob.

Cl.

B. Cl.

A. Sax.

T. Sax.

Bar. Sax.

Tpt.

Hn.

Tbn./Bar./Bsn.

Tuba

Mlt. Perc.

Timp.

Perc. 1

Perc. 2

19

18

19

20

21

22

27 Funky!

Fl.

Ob.

Cl.

B. Cl.

A. Sax.

T. Sax.

Bar. Sax.

27 Funky!

Tpt.

Hn.

Tbn./Bar./Bsn.

Tuba

Mlt. Perc.

Timp.

Perc. 1

Perc. 2

43

Fl.

Ob.

Cl.

B. Cl.

A. Sax.

T. Sax.

Bar. Sax.

43

Tpt.

Hn.

Tbn./Bar./Bsn.

Tuba

Mlt. Perc.

Timp.

Perc. 1

Perc. 2

50

Fl. *mf*

Ob. *mf*

Cl. *f*

B. Cl. *mf*

A. Sax. *f*

T. Sax. *mf* *f*

Bar. Sax. *f*

50

Tpt. *mf*

Hn. *mf* *f*

Tbn./Bar./Bsn. *mf*

Tuba *mf*

Mlt. Perc. *mf*

Timp.

Perc. 1 *p* *f*

Perc. 2

