

L'Ame de Notre Harmonie

Solo Soprano

Wind Band / Concert Band / Harmonie / Blasorchester / Fanfare

Jérôme Naulais / Marie-Carmen Gomez

EMR 11320

1	Score	2	1 st Trombone $\text{♩} + \text{♮}$
1	Solo Soprano	2	2 nd Trombone $\text{♩} + \text{♮}$
1	Piccolo	1	Bass Trombone $\text{♩} + \text{♮}$
4	1 st Flute	2	Baritone $\text{♩} + \text{♮}$
4	2 nd Flute	2	E \flat Bass ♩
1	Oboe (optional)	2	B \flat Bass ♩
1	Bassoon (optional)	2	Tuba ♮
1	E \flat Clarinet (optional)	1	String Bass (optional)
5	1 st B \flat Clarinet	1	Timpani
4	2 nd B \flat Clarinet	1	Suspended Cymbal
4	3 rd B \flat Clarinet	1	Glockenspiel
1	B \flat Bass Clarinet (optional)		
1	B \flat Soprano Saxophone (optional)		
2	1 st E \flat Alto Saxophone		
1	2 nd E \flat Alto Saxophone		
2	1 st B \flat Tenor Saxophone		
1	2 nd B \flat Tenor Saxophone		
1	E \flat Baritone Saxophone (optional)		
1	E \flat Trumpet / Cornet (optional)		
3	1 st B \flat Trumpet / Cornet		
3	2 nd B \flat Trumpet / Cornet		
3	3 rd B \flat Trumpet / Cornet		
2	1 st F & E \flat Horn		
2	2 nd F & E \flat Horn		
2	3 rd F & E \flat Horn		

Special Parts

1	1 st B \flat Trombone ♮
1	2 nd B \flat Trombone ♮
1	B \flat Bass Trombone ♮
1	B \flat Baritone ♮
1	E \flat Tuba ♮
1	B \flat Tuba ♮

Fanfare Parts

2	1 st Flugelhorn
2	2 nd Flugelhorn
3	3 rd Flugelhorn

Print & Listen
Drucken & Anhören
Imprimer & Ecouter



www.reift.ch



EDITIONS MARC REIFT

Route du Golf 150 • CH-3963 Crans-Montana (Switzerland)

Tel. +41 (0) 27 483 12 00 • Fax +41 (0) 27 483 42 43 • E-Mail : info@reift.ch • www.reift.ch

Recorded on CD - Auf CD aufgenommen - Enregistré sur CD

L'Ame de Notre Harmonie

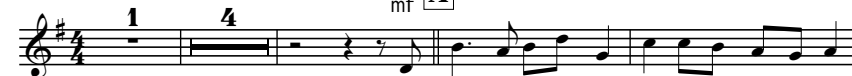
Jérôme Naulais
M. C. Gomez

SOLO
SOPRANO

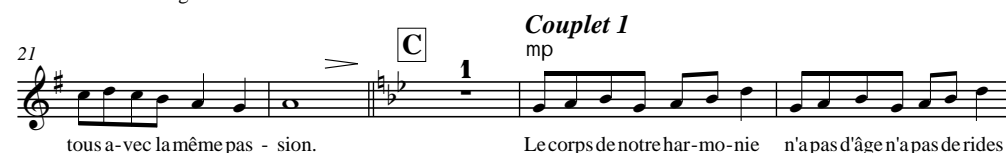


Photocopying
is illegal!

Moderato $q = 72$



De puis des dé-cen-nies l'âme de notre Har-mo-nie



EMR 11320

© COPYRIGHT BY EDITIONS MARC REIFT CH-3963 CRANS-MONTANA (SWITZERLAND)
ALL RIGHTS RESERVED - INTERNATIONAL COPYRIGHT SECURED

www.reift.ch

L'Ame de Notre Harmonie

Jérôme Naulais
M. C. Gomez

Photocopying is illegal!

Moderato q = 72

2 3 4 5 6 **A** 7 8

Solo Soprano
Piccolo
1st & 2nd Flute
Oboe
Bassoon
Eb Clarinet
1st Bb Clarinet
2nd Bb Clarinet
3rd Bb Clarinet
Bb Bass Clarinet
1st Eb Alto Saxophone
2nd Eb Alto Saxophone
1st Bb Tenor Saxophone
2nd Bb Tenor Saxophone
Eb Baritone Saxophone
1st Bb Trumpet / Cornet
2nd Bb Trumpet / Cornet
3rd Bb Trumpet / Cornet
1st F Horn
2nd F Horn
3rd F Horn
1st Trombone
2nd Trombone
Bass Trombone
Baritone
Tuba in C
String Bass (optional)
Timpani
Susp. Cymbal
Glockenspiel

De puis des ai-cen-ries l'âme de notre Har-mo-nie

9 10 11 12 13 14 **B** 15 16

Solo S.
Picc.
Fl. 1/2
Ob.
Bsn.
Eb Cl.
Cl. 1
Cl. 2
Cl. 3
B. Cl.
A. Sax. 1
A. Sax. 2
T. Sax. 1
T. Sax. 2
B. Sax.
Tpt./Ctn. 1
Tpt./Ctn. 2
Tpt./Ctn. 3
Hn. 1
Hn. 2
Hn. 3
Tbn. 1
Tbn. 2
B. Tbn.
Bar.
Tbn.
Str. B. (opt.)
Timp.
Susp. Cym.
Glock.

a vi-bré au gré des Vents aux sons de nos ins-tu-ments aux rites des mi-si-ciens ve-nus de tous ho-ri-zons tous a-vec la même pas-sion. De puis des ai-cen-ries l'âme de notre Har-mo-nie

17 18 19 20 21 22 23 24

C Couplet 1 *mp*

Solo S. a vi-ber au gré des Vents aux sons de nos in-stru-ments aux rires des mu-si-ci-ens ve-nus de tous ho-ri-zons sous a-vec la même pas-sion. Le corps de notre har-mo-nie

Picc. *mp* *mf* *p*

Fl. 1/2 *mp* *mf* *p*

Ob. *mp* *mf* *p*

Bsn. *mp* *mf* *p*

E♭ Cl. *mp* *mf* *p*

Cl. 1 *mp* *mf* *p*

Cl. 2 *mp* *mf* *p*

Cl. 3 *mp* *mf* *p*

B. Cl. *mp* *mf* *p*

A. Sax. 1 *mp* *mf* *p*

A. Sax. 2 *mp* *mf* *p*

T. Sax. 1 *mp* *mf* *p*

T. Sax. 2 *mp* *mf* *p*

B. Sax. *mp* *mf* *p*

Tpt./Cnt. 1 *mp* *mf* *p*

Tpt./Cnt. 2 *mp* *mf* *p*

Tpt./Cnt. 3 *mp* *mf* *p*

Hn. 1 *mp* *mf* *p*

Hn. 2 *mp* *mf* *p*

Hn. 3 *mp* *mf* *p*

Tbn. 1 *mp* *mf* *p*

Tbn. 2 *mp* *mf* *p*

B. Tbn. *mp* *mf* *p*

Bar. *mp* *mf* *p*

Tba. *mp* *mf* *p*

Str. B. (opt.) *mp* *mf* *p*

Timp. *p* *mf* *p*

Susp. Cym. *p* *mf* *p*

Glock. *p* *mf* *p*

25 26 27 28 29 30 31 32

D Couplet 2 *mp*

Solo S. n'a pas d'âge n'a pas de rides il danse, il joue, se dan-dine sur les me-sures à comp-ter des pit-tes notes en so-ueil-lées de toutes les mu-siques en flam-mées le pa-ys de l'Har-mo-nie

Picc. *mp* *mf* *p*

Fl. 1/2 *mp* *mf* *p*

Ob. *mp* *mf* *p*

Bsn. *mp* *mf* *p*

E♭ Cl. *mp* *mf* *p*

Cl. 1 *mp* *mf* *p*

Cl. 2 *mp* *mf* *p*

Cl. 3 *mp* *mf* *p*

B. Cl. *mp* *mf* *p*

A. Sax. 1 *mp* *mf* *p*

A. Sax. 2 *mp* *mf* *p*

T. Sax. 1 *mp* *mf* *p*

T. Sax. 2 *mp* *mf* *p*

B. Sax. *mp* *mf* *p*

Tpt./Cnt. 1 *mp* *mf* *p*

Tpt./Cnt. 2 *mp* *mf* *p*

Tpt./Cnt. 3 *mp* *mf* *p*

Hn. 1 *mp* *mf* *p*

Hn. 2 *mp* *mf* *p*

Hn. 3 *mp* *mf* *p*

Tbn. 1 *mp* *mf* *p*

Tbn. 2 *mp* *mf* *p*

B. Tbn. *mp* *mf* *p*

Bar. *mp* *mf* *p*

Tba. *mp* *mf* *p*

Str. B. (opt.) *mp* *mf* *p*

Timp. *p* *mf* *p*

Susp. Cym. *p* *mf* *p*

Glock. *mp* *mf* *p*

33 34 35 36 37 38 39 40

www.reift.ch

EMR 11320

WIND BAND – HARMONIE – BLASORCHESTER

JAZZ / RAGTIME / DIXIELAND

EMR 10209	12th Street Rag	BOWMAN (Tailor)
EMR 1617	1919 Rag	TRADITIONAL (Thomas)
EMR 1243	A Portrait	GERSHWIN (Armitage)
EMR 10586	A Portrait (Trombone Quartet)	GERSHWIN (Armitage)
EMR 10076	A String Of Pearls	GRAY (Saurer)
EMR 10175	A Trumpeter's Pleasure (Trumpet Solo)	KÜBLER
EMR 1336	Ain't She Sweet	AGER / YELLEN (Armitage)
EMR 1516	Alexander's Ragtime Band	BERLIN (Tailor)
EMR 10616	Aloa-Oe	TAILOR
EMR 1408	American Patrol (Glenn Miller)	TRADITIONAL (Richards)
EMR 10051	Artistry In Rhythm	KENTON (Saurer)
EMR 1257	Auld Lang Syne	TRADITIONAL (Armitage)
EMR 1551	Ballad For Clarinet	THOMAS
EMR 1620	Bathena	JOPLIN (Thomas)
EMR 10332	Birdland	ZAWINUL (Saurer)
EMR 10326	Black Bottom Stomp	MORTON (Saurer)
EMR 10393	Boogie Never Stops	SAURER
EMR 10371	Bourbon On The Rocks	TAILOR
EMR 10088	Bugle Call Rag	PETTIS / MEYERS (Thomas)
EMR 10168	Bumblebee	RIMSKY-KORSAKOV (Tailor)
EMR 1985	Caravan	ELLINGTON (Thomas)
EMR 1429	Chattanooga Choo Choo	WARREN (Thomas)
EMR 1632	Chewing The Rag	THOMAS
EMR 10504	Clarinet Jam (Clarinet Section)	SAURER
EMR 1836	Close To You	BACHARACH (Schneiders)
EMR 1122	Complaining Blues	ARMITAGE
EMR 1950	Danube Shuffle	IVANOVICI (Schneiders)
EMR 1073	Dixie Rag (Features Sax Section)	ARMITAGE
EMR 1975	Dreaming Of Love	LISZT (Tailor)
EMR 10355	Easy Life	TAILOR (Saurer)
EMR 1834	Everybody Loves To Jive	CORREA (Tailor)
EMR 10822	Everytime I Feel The Spirit	PARSON
EMR 10723	Everytime I Feel The Spirit (Chorus SATB)	PARSON
EMR 10837	Everytime I Feel The Spirit (Solo Voice)	PARSON
EMR 1961	Fascinating Rhythm	GERSHWIN (Tailor)
EMR 1209	Free Time Blues	ARMITAGE
EMR 10818	Freedom	PARSON
EMR 10719	Freedom (Chorus SATB)	PARSON
EMR 10833	Freedom (Solo Voice)	PARSON
EMR 10272	Georgia On My Mind	CARMICHAEL (Tailor)
EMR 1517	Glenn Miller Medley	Art.: TAILOR
EMR 1547	Gloryland (Female Solo Voice & Chorus)	RICHARDS
EMR 1530	Gloryland (Solo)	RICHARDS
EMR 10344	Glühwürmchen	LINCKE (Val)
EMR 1332	Goody, Goody	MERCER / MELNECK
EMR 1120	Happy-Go-Lucky-Rag	ARMITAGE
EMR 1203	Headliner	ARMITAGE
EMR 10036	Hello, Dolly!	HERMAN (Saurer)
EMR 1280	Hello, Dolly! (Solo)	HERMAN (Mortimer)
EMR 1431	Holiday Swing (Euphonium Solo)	ARMITAGE
EMR 1898	Holiday Swing (Solo)	ARMITAGE
EMR 1459	Honeysuckle Rose	WALLER (Thomas)
EMR 1733	I Got Rhythm	GERSHWIN (Mortimer)
EMR 10274	I Love Paris	PORTER (Tailor)
EMR 1157	I'm Getting Sentimental Over You (Trombone Solo)	BASSMAN / MILLER (Privatzk)
EMR 10190	Impromptu In Rhythm	CHOPIN (Tailor)
EMR 10154	In A Persian Market	KETELBEY (Saurer-Tailor)
EMR 1473	In The Mood	GARLAND (Thomas)
EMR 10159	Jeepers Creepers	WARREN (Saurer)
EMR 10821	Jericho	PARSON
EMR 10722	Jericho (Chorus SATB)	PARSON
EMR 10836	Jericho (Solo Voice)	PARSON
EMR 1745	Just A Gigolo (Solo)	BRAMER / CASUCCI
EMR 1557	Just Like In The Old Days	OVERLAND (Thomas)
EMR 10812	Kumbaya	PARSON
EMR 10713	Kumbaya (Chorus SATB)	PARSON
EMR 10827	Kumbaya (Solo Voice)	PARSON
EMR 1213	Let's All Take It Easy	ARMITAGE
EMR 1935	Let's Go!	TAILOR
EMR 1549	Let's Swing Again	THOMAS
EMR 1979	Li'l Darling	HEFTI (Thomas)
EMR 1402	Little Brown Jug	TRADITIONAL (Richards)
EMR 10166	Mack The Knife	WEILL (Saurer-Tailor)
EMR 10423	Mack The Knife (Solo Voice) (Version in Eb major)	WEILL (Saurer-Tailor)
EMR 10022	Mack The Knife (Solo Voice) (Version in G major)	WEILL (Saurer-Tailor)
EMR 1527	Maple Leaf Rag	JOPLIN (Thomas)
EMR 1338	Means That You're Grand	SECUNDA / JACOBS
EMR 10193	Meet Mr. Gershwin (Piano Solo)	TAILOR
EMR 10171	Meet The Bat	STRAUSS (Tailor-Saurer)
EMR 1528	Midnight In Moscow	THOMAS
EMR 10176	Moments Musicaux	SCHUBERT (Tailor)

EMR 1472	Moonlight Serenade	MILLER (Thomas)
EMR 10817	Motherless Child	PARSON
EMR 10718	Motherless Child (Chorus SATB)	PARSON
EMR 10832	Motherless Child (Solo Voice)	PARSON
EMR 10289	Navy Jump	TAILOR
EMR 10267	Night And Day	PORTER (Saurer)
EMR 10819	Nobody Knows	PARSON
EMR 10720	Nobody Knows (Chorus SATB)	PARSON
EMR 10834	Nobody Knows (Solo Voice)	PARSON
EMR 10816	O Happy Day	PARSON
EMR 10717	O Happy Day (Chorus SATB)	PARSON
EMR 10831	O Happy Day (Solo Voice)	PARSON
EMR 1463	On The Sunny Side Of The Street	MCHUGH (Thomas)
EMR 1552	Pancake Rag	THOMAS
EMR 10004	Presenting The Band	TAILOR
EMR 1119	Rise & Shine	ARMITAGE (Mortimer)
EMR 10814	Riverside	PARSON
EMR 10715	Riverside (Chorus SATB)	PARSON
EMR 10829	Riverside (Solo Voice)	PARSON
EMR 1541	Rock Around The Clock	FREEDMAN / KNIGHT
EMR 1901	Romantic Blue (Solo)	ARMITAGE
EMR 10304	Roxy Boogie	TAILOR (Saurer)
EMR 10236	Satin Doll	ELLINGTON / STRAYHORN
EMR 10503	Sax Bomb (Saxophone Section)	SAURER
EMR 1717	See You Later, Alligator	GUIDRY (Tailor)
EMR 1521	Serenade For Django	THOMAS
EMR 1744	Sing, Sing, Sing	PRIMA (Thomas)
EMR 1465	Skyliner	BARNET (Thomas)
EMR 1146	Sliding The Blues (Trombone Quartet)	ARMITAGE
EMR 1118	Southern Stomp	ARMITAGE
EMR 1665	Spring Blouse	THOMAS
EMR 1709	St. James Infirmary	TRADITIONAL (Thomas)
EMR 10490	Steamboat Stomp	SAURER
EMR 10058	Stompin' At The Savoy	GOODMAN (Thomas)
EMR 10162	Stormy Weather	ARLEN (Saurer-Tailor)
EMR 1519V	Strangers In The Night (Male Vocal)	KAEMPFFERT (Tailor)
EMR 1519	Strangers In The Night (Solo)	KAEMPFFERT (Tailor)
EMR 1803	Summertime (Porgy And Bess) (Solo)	GERSHWIN (Schneiders)
EMR 1198	Sweet And Mellow	ARMITAGE
EMR 1470	Sweet Sue - Just You	YOUNG (Thomas)
EMR 1182	Sweet Sweet Smile	CARPENTERS (Mortimer)
EMR 1138	Swing In To Spring	ARMITAGE
EMR 10815	Swing Low	PARSON
EMR 10716	Swing Low (Chorus SATB)	PARSON
EMR 10830	Swing Low (Solo Voice)	PARSON
EMR 1312	Swing Time (12 Pieces)	VARIOUS
EMR 10227	Swingair Bumble Bee (Xylophone Solo)	RIMSKY-KORSAKOV
EMR 10343	Take Five	DESMOND (Saurer)
EMR 10150	Take The "A" Train	STRAYHORN (Tailor-Saurer)
EMR 1900	Take-Off (Solo)	ARMITAGE
EMR 10178	Tchaikovsky Boogie	TCHAIKOVSKY (Tailor)
EMR 10172	The Opener	KÜBLER
EMR 1747	The Speakeasy	MORTIMER
EMR 1368	The St. Louis Blues	HANDY (Mortimer)
EMR 10151	The Washboard King (Washboard Solo)	TAILOR
EMR 1799	Tiger Rag	LA ROCCA / DE COSTA
EMR 1621	Time for Rag	THOMAS
EMR 1382	Trumpet Blues And Cantabile (Trumpet Trio)	JAMES (Thomas)
EMR 10199	Tutti Frutti (Solo)	BUTTALL
EMR 1390	Tuxedo Junction	HAWKINS / JOHNSON
EMR 10181	Venice Junction	STRAUSS (Tailor)
EMR 10820	Wade In The Water	PARSON
EMR 10721	Wade In The Water (Chorus SATB)	PARSON
EMR 10835	Wade In The Water (Solo Voice)	PARSON
EMR 1109	Way Down Blues (Bass Trombone Solo)	ARMITAGE
EMR 1365	Way Down Blues (Tenor Trombone Solo)	ARMITAGE
EMR 10823	We Shall Overcome	PARSON
EMR 10724	We Shall Overcome (Chorus SATB)	PARSON
EMR 10838	We Shall Overcome (Solo Voice)	PARSON
EMR 10690	What A Wonderful World (Solo)	THIELE / WEISS (Saurer)
EMR 10813	When The Saints	PARSON
EMR 10714	When The Saints (Chorus SATB)	PARSON
EMR 10828	When The Saints (Solo Voice)	PARSON
EMR 1899	Wild And Blue (Solo)	ARMITAGE
EMR 1471	You Are Driving Me Crazy	DONALDSON (Thomas)

A World of Music...
 PRINT & LISTEN
 DRUCKEN & ANHÖREN
 IMPRIMER & ECOUTER

www.reift.ch